

## HOW A 5600 TRANSDUCER WORKS:

The Model 5600 transducers are components of the ultrasonic liquid level and open-channel flow 5600 Series. These transducers are designed to perform in a wide-range of environments, including caustics and other demanding conditions. Niagara will design your system solution to include the appropriate transducer for your specific application and environment. You are assured of superior performance and long-term satisfaction. Niagara offers some of the most versatile and powerful transducers in the industry. Our transducers have an accuracy of 0.25% of measured distance, or 1/4", whichever is greater, in approved applications. Available in frequencies of 22kHz and 43kHz to fit a variety of materials and distances. The range of Niagara sensors allows you to read levels from 1 to 2 feet to beyond 50 feet depending on sensor range. See table below. The transducer has a narrow beam angle, allowing it to be used in challenging applications.



Model 5600 transducers have a PVC/ABS body with a TFE face and Viton seal. They are mounted using a 1-inch NPT thread. For sanitary applications, Niagara offers a 304 stainless steel body with TFE face. For hazardous liquids, Niagara offers the transducer mounted in an ANSI standard flange with a full seamless TFE face. The 5600 Series system can be supplied with optional external or internal temperature probes to correct for changes in the speed of sound when higher accuracies are required.

## TRANSDUCER SPECIFICATION FOR LEVEL ONLY APPLICATIONS

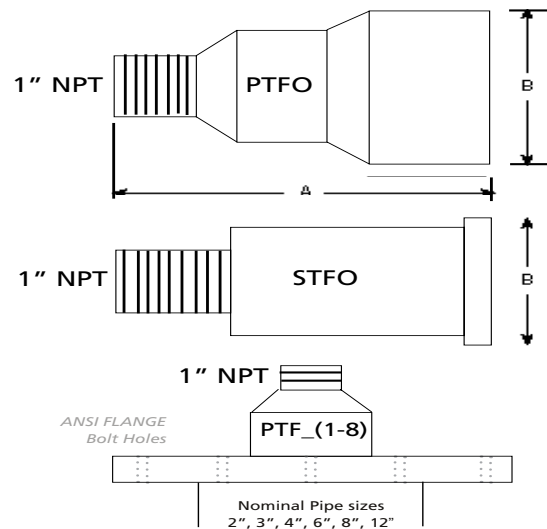
	Nominal Range	Minimum Range	Temperature Range	Weight	Frequency	Beam Angle
<b>56T-25PT</b>	25' (7.6m)	12" (305mm)	-40° to 180°F (-40° to 82°C)	1.2 lbs (0.5 kg)	43kHz	12° included
<b>56T-25ST</b>	25' (7.6m)	12" (305mm)	-40° to 230°F (-40° to 110°C)	1.2 lbs (0.5 kg)	43kHz	12° included
<b>56T-50PT</b>	50' (15.2m)	24" (610mm)	-40° to 180°F (-40° to 82°C)	3.1 lbs (1.4 kg)	22kHz	12° included
<b>56T-50ST</b>	50' (15.2m)	24" (610mm)	-40° to 230°F	6.0 lbs	22kHz	12° included

## TRANSDUCER SPECIFICATION FOR LEVEL & FLOW APPLICATIONS

	Nominal Range	Minimum Range	Temperature Range	Weight	Frequency	Beam Angle
<b>56T-25PT</b>	25' (7.6m)	12" (305mm)	-40° to 180°F (-40° to 82°C)	1.2 lbs (0.5 kg)	43kHz	12° included
<b>56T-25ST</b>	25' (7.6m)	12" (305mm)	-40° to 230°F (-40° to 110°C)	1.2 lbs (0.5 kg)	43kHz	12° included

## TRANSDUCER MOUNTING DIMENSIONS

	A	B
<b>56T-25PTFO</b>	5.2" (132.1mm)	2.3" (58.41mm)
<b>56T-25STFO</b>	5.5" (139.7mm)	2.5" (63.5mm)
<b>56T-50PTFO</b>	6.9" (175mm)	4.2" (102mm)
<b>56T-50STFO</b>	6.8" (172.7mm)	4.7" (119.3mm)
<b>56T-25PTF_</b>	5.3" (134.8mm)	Standard ANSI Flanges
<b>56T-50PTF_</b>	7.45" (188mm)	Standard ANSI Flanges



## ORDERING INFORMATION

Model # 56T - - - T - - -

<b>Nominal Range</b>	25 = 25 Feet 50 = 50 Feet
<b>Body Type</b>	P = PVC/ABS S = Stainless Steel 25 ft S = Stainless Steel 50 ft
<b>Face Type</b>	T Teflon
<b>Mounting</b>	F0 = 1" NPT F2 = 25' PVC/ABS, 2" ANSI Flange Bolt Holes F3 = 25' PVC/ABS, 3" ANSI Flange Bolt Holes F4 = 25' PVC/ABS, 4" ANSI Flange Bolt Holes F6 = 25' PVC/ABS, 6" ANSI Flange Bolt Holes F8 = 25' PVC/ABS, 8" ANSI Flange Bolt Holes F4 = 50' PVC/ABS, 4" ANSI Flange Bolt Holes F6 = 50' PVC/ABS, 6" ANSI Flange Bolt Holes F8 = 50' PVC/ABS, 8" ANSI Flange Bolt Holes
<b>Cable Length</b>	010 = 10 Ft. Pigtail 025 = 25 Ft. Pigtail 050 = 50 Ft. Pigtail 075 = 75 Ft. Pigtail 100 = 100 Ft. Pigtail
<b>Internal Temperature Sensor*</b>	T0 = None T1 = PVC/ABS Body Only

## APPROVALS

CSA for use in Class I, Groups A, B, C, and D; Class II, Groups E, F, and G; Class III.

FM and CE approved for Class I, II, III, Division I, Groups C, D, E, F, G.

## OPTIONS

External temperature probes are available.

\*External temperature sensor recommended due to response time